

SHARP

TRAINING MANUAL

MODEL POS UTILITY



Contents

Page No	Description
2.	Managing Databases
2.	Communications Test
3.	Trouble Shooting
4.	Configuration File
4.	Delete Data
5,6	Edit Register Logo
7.	Register models supported
7.	Pos utility
8.-12	Retrieve from register options
13.	Edit
13.	Help
14.	Copy Register Data
15.	Change ECR to Smartcard Type
16.	Register Communication settings
18.	TCP/ip
19,20	Modem Setup Utility
21,	Auto keys
22,	Firmware Version
23,	Modem Status
23,24,25	Edit Products
26,27	Edit Departments
28,	Tools
29,	File
30,	Edit Databases and Configuration options
31,	Progress
32.33	Edit Direct Keys
34,	Edit function text
35,	Edit Free keys
36,37	Send to register options
38,39	Condiment Tables
40,	Add Plus and or menus
40,	Plu Preset

Managing Databases

There is only one database name supported by **POSUtility**, this is '**POSUtility.mdb**'. This file must exist in the program directory (where **POSUtility** was installed), for **POSUtility** to start. If you wish to access multiple databases, use the Create Customer Database under the File Menu. This allows you to organise Folders under a starting path of **\\CUSTOMERS**. This option creates the Folder and copies an empty 'POSUtility.mdb' to it.

Using the Open Database option of the File Menu you can make a different database current by selecting a new directory. An input box will open allowing you to enter a directory name created above, or if left blank will display the directory tree, allowing you to select the directory. A **POSUtility** database must exist in this directory, otherwise an error message will be displayed. The current database is shown as part of the caption at the top of the screen.

NB. The Sales Files and the Log File will also be written to this directory!

Example:

You have two Users or a Bar and Bottle Shop. The Bar has a number of ER-A440's and the Bottle Shop an ER-A570. The PLU's and Departments may be the same for the Bar and Bottle Shop, but the prices are different.

First **RETRIEVE** the data from one of the ER-A440's. If the keyboards are to be the same, you can use the Copy Register Data option. Modify/Create the PLU's and send all the appropriate data files to the other ER-A440's. Now create directories for each location, change to these in turn and copy the locations registers back.

Communications Test

This is performed before each **SEND** or **RETRIEVE** operation. If communications is established, a Green Light will show with the message 'Comms OK', else a Red light will show with the message 'Comms Failed'.

The obvious things to check are;

- Cables plugged in.
- ECR turned on.
- ECR is not busy (in the middle of a transaction).
- The On-Line settings are correct.
- The ECR On-Line number is correct.
- The correct baud rate etc are selected in **POSUtility**.
- The correct COM Port is selected in **POSUtility**.
- If you are using a Broadcast Multiplexor, you cannot have leads attached to it that are not connected to an ECR at the other end.

Troubleshooting

Communications

ER-A750 and UP-3300

- If an ER-A750 or UP-3300, passes a Communications Test, but then fails doing other operations, or appears to stop for an extended length of time, check that a printer is configured but **NOT** physically attached to the ECR. The most common cause of this effect is the ECR trying to print to a Journal Printer without one being present.

All ECR's

- **POSUtility** will only update its copy of the ECR File Structure when (a) the ECR has just been created, (b) when data is retrieved from the ECR, (c) when asked to do so by using the Retrieve FDS Option and (d) when it has trouble fitting the PLU/EAN/Department data into the ECR. The most common cause of failure, (other than actual communication problems) when sending PLU/EAN/Department Data to the ECR is because you have modified the ECR File Structure after **POSUtility** has already updated the File Structure. The first thing to do is use the retrieve function to **Update FDS Data**.

ER-A770

- This ECR allows you to have weird combinations of prices and descriptions. While **POSUtility** allows most combinations, it is good policy to use the same number of prices and descriptions.

ER-A440S and ER-A450S

- Communication at speeds above 9600 baud can be unreliable.

Modem Support

POSUtility will use a modem to connect to the selected ECR, if this ECR has a phone number associated with it. The number and other settings relevant to modems, is entered on the Register Communications Settings form.

You have the choice on the Register Communications Settings form to disconnect the modem after the current operation(s). The default here is to stay connected. Whilst the modem is connected, information about duration and number connected to is displayed as well as a **Hangup** button. This button is used to disconnect the modem if you chose to stay connected when you selected the ECR.

The modem will be automatically disconnected if you select another ECR which has no phone number associated with it, or if it has a phone number that is different to the one currently connected.

Modem programming can be accomplished by using the Modem Setup Utility form.

Configuration File

When starting, **POSUtility** looks for a file called 'POSUtility.cfg' in the default directory. This file, which is a text file editable with Notepad, can contain a number of configuration settings, which if present will be processed. These are;

UseTermFile = y

If set to 'y' then the Reading (X) and Clearing (Z) options will access the Term Files. i.e. the readings will now be X2/Z2. The default is to do X1/Z1's. Obviously the Term Files must be configured in the ECR!

ReportPrintControl = ?

With this set, printing during a Z Read can be controlled. The default is Not to print. The options for ? here are;

- | | | |
|---|---|------------------------------|
| 0 | = | print on Receipt and Journal |
| 1 | = | print on Receipt only |
| 2 | = | print on Journal only |
| 3 | = | no printing |

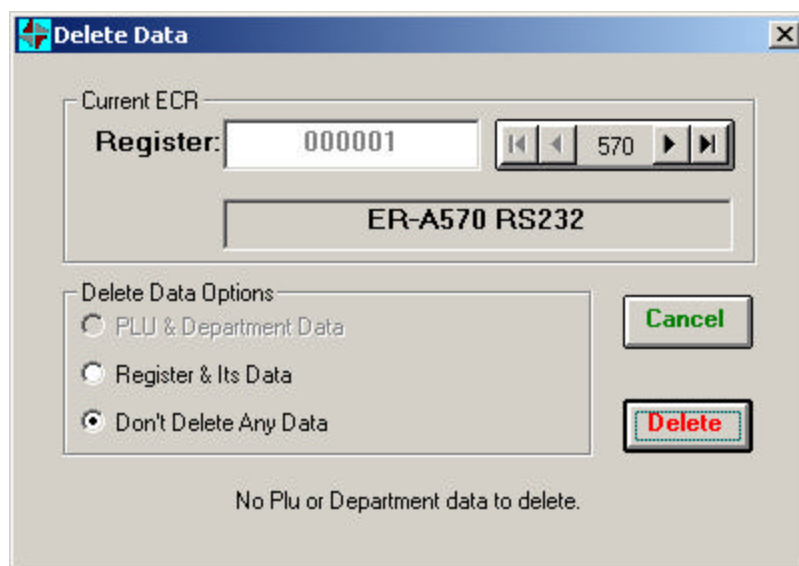
If the 'POSUtility.cfg' file is missing the default values are assumed. The entries in the configuration file are not case sensitive.

Delete Data

As **POSUtility** has been designed as a Maintenance Tool for a range of **SHARP** ECR's, from time to time it will be necessary to remove some ECR's and/or the PLU and Department Data from the Database. It would be wise to backup the Current Database before doing this.

If you are using multiple databases in sub-directories, these should be backed up.

There are a number of warnings issued by **POSUtility** before any deletion takes place. If you delete ALL of the ECR's, you will be advised that this has happened and the ECR related controls will be disabled. Once at least one ECR is added these controls will be enabled again.



Delete Data Options

Register & Its Data

- Delete Register from database

PLU & Department Data

- Delete Departments & Products from database

Current ECR

- The Register to be deleted. This is selected using the control on the form.

Delete

- Deletes the selected Register or Data Files. The data files are both the PLU/EAN Data and the Department Data.

Cancel

- Cancel this operation and exit the Delete Data form.

Edit Register Logo

This form displays the ECR Logo information. This can be up to 6 lines, the actual number of characters being determined by the ECR/Printer Type. The number of characters for the Current ECR is displayed at the bottom of the Form. The Logo is centred on the line automatically and sent to the ECR centred.

To make a character Double Width, use the following key combination [SHIFT+6]. This will insert a ^. Each character that you want to make Double Width must be preceded with one of these characters. A look at what is retrieved from the ECR will give a better idea of what is required.

Edit Register Logo

Current ECR

Register:

Logo Lines

1

2

3

4

5

6

To make a character 'Double Size', insert a ^ (SHIFT+6) before it. This displays as a ^ and the character will now take up 2 places.

Logo length for this ECR is 30 characters.

Current ECR

- Information displayed is for this Register and Type

Logo Lines

- The six lines of the ECR Logo.

Add

- If the Logo hasn't been retrieved from the ECR, you can Add it for the current ECR. This option isn't available if there is already data.

Edit

- Edit the currently displayed Logo text. At the bottom of the form there is a message advising the number of characters for the Logo Line which is dependant on the ECR Type and in the case of ECR's without in-built printers, it can be 30 or 40 characters for the external printer. In this case the width is set on the Register Settings Form.

Cancel

- Cancel your current edits.

Close

- Close the Logo form.

Register Models Supported

POSUtility currently supports the following **SHARP** ECR Types;

- ER-A220
- ER-A440
- ER-A440S
- ER-A450S
- ER-A460
- ER-A470
- ER-A550
- ER-A570
- ER-A570 (SharpSmart)
- ER-A610
- ER-A610 (SharpSmart)
- ER-A750
- ER-A750 (SharpSmart)
- ER-A750 (PRS Scanning)
- ER-A770
- ER-A770 (SharpSmart)
- ER-A770 (PRS Scanning)
- UP-600
- UP-700
- UP-3300
- UP-3300 (SharpSmart)

- UP-3300 (PRS Scanning)

POSUtility

POSUtility was developed with the sole purpose of allowing users to easily duplicate and change **SHARP** ECR configurations. This means that Data from a current ECR needs to be RETRIEVED to the **POSUtility** Database before it can be edited and resent. This may be as simple as doing a Master Reset on the ECR and then retrieving all the data, or retrieving all the data from an ECR which is programmed the way you like. The only exception here is that PLU and Department Data can be created using the appropriate edit function, without having any ECR's configured.

POSUtility is NOT a Stock Control program. It is an ECR Maintenance program with some added features which allow the ECR to be 'X' and 'Z' Read back to a text file.

Edit Databases and Configuration

- Actions which affect the **POSUtility** Database and default settings.

SEND TO REGISTER

- Options for sending data to ECR's from the **POSUtility** Database.

RETRIEVE FROM REGISTER

- Options for the retrieving of data from ECR's to the **POSUtility** Database.

File

- Drop-Down Menu that allows access to opening the Log Files (*.txt) and the Sales Files (*.csv).

Edit

- Drop-Down Menu that allows access to all the Database Editing functions.

Tools

- Drop-Down Menu that has selections to Compact the Database, Delete the Log and Sales Files, and Delete All Data Files.

Help

- Drop-Down Menu with selections for Help and About **POSUtility**.

Exit POSUtility

- Close all files and exit the program.

Retrieve from Register options.

These options control what data is extracted from the ECR.

Calling Sales Options

There are three choices for calling sales back into a file. The file used has a default name supplied by **POSUtility** which is made up of the date, ECR Number and either an 'X' or a 'Z'. The file is a comma delimited text file and has an extension of 'CSV'. This file will be placed into the directory where the *current* database is. This can be accessed using a text editor, spreadsheet or database. Whilst in **POSUtility** this file can be opened with a text editor from the File Menu. Each line of the file has the same number of fields. This has been done to simplify Importing and manipulation of the data to other programs. Because of this feature, some lines will have blank fields. Appended to the start of each line is the system date when the sales were called, followed by a number representing the Type of Sales. A list of these types can also be found in a text file called 'SalesRecordTypes.txt' supplied with **POSUtility**. The fields in the Sales File are;

Date (DD/MM/YYYY)
Type
Clerk/Cashier Number
Code (PLU, EAN, Dept, Transaction, Hour)
Description
Qty 1
Dlrs 1
Qty 2
Dlrs 2
Qty 3
Dlrs 3

N.B. The quantity shown for PLU, EAN and Department sales will include the decimal places set with the SRV 906 Job. If 3 decimal places are set, a sale of 1 item will show as 1000! The 3 Qty and Dlrs (Dollars) fields are for sales up to 3 price levels. If the Type of sale only supports one price level, this will be shown under Qty 1 and Dlrs 1. The ER-A750, ER-A770 and UP-3300 handle sales in a different way from other ECR's. For these ECR's the column between the type and Qty1 will have the price level of the sold item. In this case only Qty1 and Dlr1 will be used and there will be no description for the sold PLU. Other ECR's will have a '0' in this column and the sales at different levels will be in the Qty1 and Dlr1 to Qty3 and Qty3.

The Types are;

(1) **PLUs & EANs**

(2) **Departments**

(3) **Transactions & Finalising Keys**

See list below for transaction types.

(4) Hourly Sales

The number appearing in field three of the hourly sales records relates to the 'Memory Type'. This is the number of periods since Midnight. This period is 15 Minutes for a 12 Hour System and 30 Minutes for a 24 Hour System. e.g. 11 on a 12 Hour System would be the period from 2:30am to 2:45am.

(5) Clerks

Sales are by Clerk number and transaction number. See list below for transaction types.

(6) Cashiers

Sales are by Cashier number and transaction number. See list below for transaction types.

Transaction Types:

The following numbers, relating to the type of transaction, appear in field four of Type 3 and Type 5 Sales. The list shown is not a complete list of all the transaction types.

1001 = %1
1002 = %2
1003 = %3
1004 = %4
1201 = (-)1
1202 = (-)2
1203 = (-)3
1204 = (-)4
2001 = TAXABLE SUB-TOTAL 1
3001 = NET 1
3002 = NET 2
3100 = ORDER TOTAL
3200 = PAID TOTAL
3600 = NON-COMMISSION SALE
4000 = REFUND
4001 = RETURN
4100 = VOID
4101 = VOID 2
4200 = VOID MODE
4300 = MANAGER VOID
4400 = SUB-TOTAL VOID
5000 = CUSTOMERS
5100 = NO SALE
6000 = PREVIOUS BALANCE
6001 = PREVIOUS BALANCE 2 (DRIVE THRU)
6100 = NEW BALANCE
6101 = NEW BALANCE 2 (DRIVE THRU)
7001 = CASH 1
7002 = CASH 2
7100 = CASH IN DRAWER
7200 = CASH/CHIT IN DRAWER
8001 = CHEQUE 1

8002 = CHEQUE 2
8003 = CHEQUE 3
8004 = CHEQUE 4
8100 = CHITS IN DRAWER
9001 = CREDIT 1
9002 = CREDIT 2
9003 = CREDIT 3
9004 = CREDIT 4
9005 = CREDIT 5
9006 = CREDIT 6
9007 = CREDIT 7
9008 = CREDIT 8
A101 = CHARGE
D001 = RECEIVED ON ACCOUNT 1
D002 = RECEIVED ON ACCOUNT 2
D101 = PAID OUT 1
D102 = PAID OUT 2

X Read & Save to File

- This selection calls sales but does not clear any totals in the ECR. NB. The Term File sales are not collected by **POSUtility**. You are prompted for a filename to save the sales to. The default filename offered is YYYYMMDD[ECR#]X.CSV. If the file exists, you be asked to confirm overwriting the existing one. If Term Files exist in the register, then **POSUtility** will perform an X2, otherwise an X1.

Z Read & Save to File

- This option calls sales and then CLEARS the totals in the ECR. NB. The Term File sales are not collected OR cleared by **POSUtility**. You are prompted for a filename to save the sales to. The default filename offered is YYYYMMDD[ECR#]Z.CSV. If the file exists, you be asked to confirm overwriting the existing one. On ECR's which support GLU's (Guest Look Ups), if there are open GLU's, then depending on the SRV setting of Job 929 Clerk Sales cannot be cleared. To be able to Clear Clerk Sales while there are open GLU's, Job 929-B must be set to a 1 or 3. On ECR's that won't allow **POSUtility** to clear the Clerk Sales, an error message will be displayed, giving you the choice of Finalising the open GLU's and Retrying, or Cancelling the clearing of Clerk sales. If Term Files exist in the register, then **POSUtility** will perform a Z2, otherwise a Z1.

Don't call sales

- This is the default option here.

Register Data Options

One of the most useful features of **POSUtility** is its ability to Retrieve Data from the ECR and store it in the database for editing and resending. There are four possible options here. All the RAM Data can be retrieved for sending to another ECR, or for saving the ECR configuration. FDS Data can be uploaded on its own, but as this is normally handled automatically by **POSUtility**, the only time you would do this if you know the ECR File Structure has been changed. Register Data can either include or exclude the PLU/EAN and Department Data. The Register Data contains, Direct Keys, Free Keys, Function Text, FDS Data and ECR Logo. Data for ALL the

configured registers is held in the **POSUtility** Database. See Managing Databases for information on keeping multiple copies of the Database.

Include Plu's & Dept's

- Ticks all the CheckBoxes on the **ECR Files** tab, as well as PLU's, EAN's and Departments on the **Products** tab, for retrieval from the ECR.

Exclude Plu's & Dept's

- Ticks all the CheckBoxes on the **ECR Files** tab, but nothing on the **Products** tab, for retrieval from the ECR.

Don't get register data

- This is the default option here.

RETRIEVE FROM REGISTER

ECR Files | Products | X/Z Reads | GLU Sales

☐ File Data Structure ☐ Free Key Table ☐ ECR RAM Image

☐ Receipt Logo ☐ Direct Keys ☐ TCP/IP Config

☐ Function Text ☐ Auto Keys

☐ SRV Parameters ☐ Touch Screen

☐ Condiment Tables

☐ PLU Menu Preset

☒ CommsTest

You can retrieve the following files from the ECR, as well as those described above.

File Data Structure (FDS)

- Get FDS data from the ECR. This is not normally needed, as the FDS data is updated as required by **POSUtility**. The obvious time to use this is if you have changed the File Structure of the ECR. Use this option if you change the file structure of an ECR, otherwise you will experience problems sending PLU/EAN/Department Data.

Receipt Logo

Function Text

SRV Parameters

- This data is not editable, but can be saved in the current database with other files for the ECR.

Condiment Tables

PLU Menu Presets

Free Key Table

Direct Keys

Auto Keys

Touch Screen

- This option is only applicable to the UP-3300.

ECR RAM Image

- Get ALL RAM data from the ECR. Please note ***this data is NOT EDITABLE!***

This option gets a complete memory image from the ECR. This image is unique to the Firmware (EPROM) Version installed in the ECR where the data was retrieved from. Sending it to an ECR with a different version can cause the ECR to ***lock up***.

All RAM data is used to create a register identical to the source ECR including any sales.

TCP/IP Config

- This option is only applicable to the Starrtec Services TCP/IP Interface for **Sharp** ECR's.

Comms Test

- This is a Communications Test to see if there is a valid ECR connected to the computer and if it is available for Comms. This test is performed before EVERY Comms Session. If no SEND or RETRIEVE options are selected, the test will be performed on its own. During this test the Progress Bar will be displayed to show the result.

RETRIEVE

- Clicking this button will ask you to Select a Register (ECR) for this operation.

Edit

The Edit drop-down menu allows access to the same features as the buttons at the bottom of the **POSUtility** main screen. The Delete Data option is not available from here.

Edit

Edit Logos

Edit Function Text

Edit Free Keys

Edit Direct Keys

Edit Auto Keys

Edit Products

Edit Departments

Edit PLU Menus

Edit Condiment Tables

Help

Access Help information from here.

Help

Copy Register Data

This option allows copying various data files from one register to one or more of the same type.

Copy Register Data

Source ECR

Register: 192.168.10.4 600 UP-600 TCP/IP

Things to Copy

☐ Free Keys & Direct Keys

☐ Touch Screen Keyboard

☐ Auto Sequencing Keys

☐ SRV Parameters

☐ Condiment Tables

☐ Function Text

☐ PLU Menu Presets

☐ TCP/IP Configuration

Destination ECR(s)

ECR	Type	Select
000070	700	<input type="checkbox"/>
000077	770	<input type="checkbox"/>

Select All

Select None

Copy

Warning - use this option with caution. Usage implies your understanding of the capabilities of the target ECR.

Close

Source ECR

This is the ECR that will have its selected data duplicated. If there is no data in the database for this ECR, the selection Checkbox will be greyed out.

Things to Copy

If the checkboxes are greyed out, there is no data for this selection in the database (hasn't been retrieved), or the selected register doesn't support the selection. As some data can be copied across models (Condiments and PLU Menus), the list of Destination ECR's will change depending on the selections you make.

Destination ECR(s)

If there are any other ECR's in the database of the same type, then they will be displayed here. You can tick one or more of these.

Select All Select ALL the displayed ECR's.

Select None De-Select ALL the displayed ECR's.

Copy

Starts the copy operation. Details of which ECR was copied to which is written to the Log File.

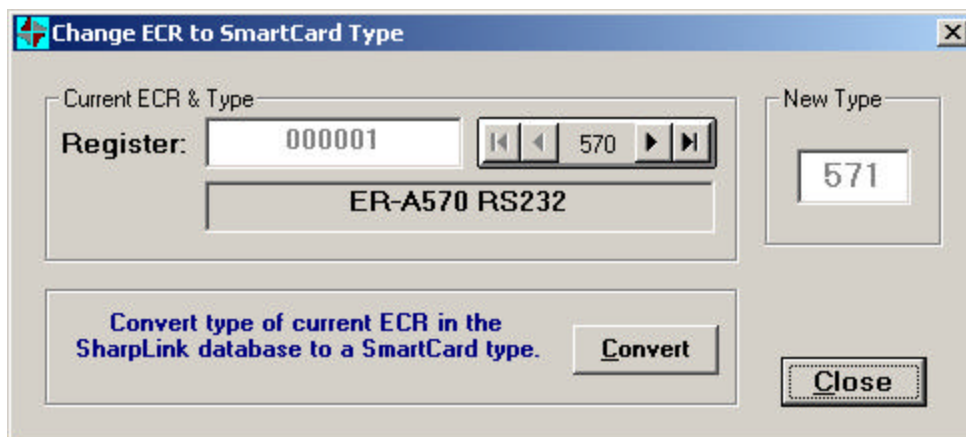
Exit

Close the Copy Keyboard Data Form.

Change ECR to SmartCard Type

SHARP ECR's which have SmartCard capability have a different file structure for the PLU and Department Files. If you wish to upgrade an ECR to become a SmartCard Type, then use this option.

First **RETRIEVE** all the data from the ECR. If the ECR was a SharpSmart UP-3300 using Version 1.0.1 Firmware or earlier, create it as a UP-3300 in Sharp-link before retrieving the data. Use this option to change its type. In the process the AllRam and FDS Data will be deleted from the **POSUtility** Database and the ECR Type changed the SmartCard equivalent number. Then Upgrade the ECR, setup the file structure, 900 jobs etc. When this is completed, send the data from **POSUtility** back to the ECR.



New Type

- The SmartCard equivalent type for the current ECR.

Convert

- Make the Change

Current ECR Type

- Will only display ECR's which are capable of being upgraded to SmartCard operation.

Register

- The ECR to be converted.

Exit

- Close the Change Type form.

Register Communication Settings

This is where you configure the settings for On-Line Communications. Each ECR has separate settings in the database.

This form is used for a number of tasks; Sending, Retrieving and Exporting Data. The caption on the button shown as **Get** on the sample below, will change to reflect the operation about to be performed on the selected ECR.

Get Data from Register

Register: 203.52.105.140 - On-Line 610 in
Register Type: 610 - Sharp ER-A610
Port: 1
Baud Rate: 38400
Comms Logging: Yes
Logo Width: 30
Modem Number:
Hangup Modem when done? ☐
Register Name: On-Line 610 in Startec Office
Parity: Odd
Data Bits: 7
Stop Bits: 1
Modem Timeout: 120
Comms Retries: 2
Realm User Name: register
Realm Password: xxxxxx
Delete Register Add New Register Change Details
SharpLink IP Address: 127.0.0.1
Firmware Version Cancel **Get**

Control Descriptions:

Port

- This is the Computer Port to use for ECR Communications. Normally this would be set to either 1 or 2, but Comm Ports up to COM16 are supported. You will not be allowed to select an invalid Comm Port.

Baud Rate

- The Baud Rate for ECR Communications is selected here. The range available is from 1200 to 38400 baud. The standard setting for Sharp ECR's is 9600. This corresponds to a 5 setting with the 6112 PGM2 Job. The ER-A750, ER-A770, UP-600/700 and UP-3300 can communicate at up to 38400 baud. A setting of 19200 gives good results providing the cabling is not of excessive length and in a noisy (electrically), environment.

Register Type

- Select the type of the ECR.

Modem Number

- If there is a modem number, this number will be dialed if a modem is found on the selected comm port, instead of normal communications.

Comms Logging

- Select 'ON' to log all ECR communications to file ***POSUtilityLog.txt***. Using this option is useful when trying to resolve a problem communicating to the ECR.
- Information written to the file includes; Date & Time, Port & Settings, ECR Number & Type, what has been sent and the reply from the ECR.
- This obviously takes up Hard Disk space, so it should be deleted at regular intervals if you choose to leave it selected.
- The options are;

On	Comms Logging On
Off	Comms Logging Off

Logo Width

- The ER-A750, ER-A770, UP-600/700 and UP-3300 can use a number of Receipt/Kitchen Printers. These printers can have different number of columns. The ER-01PU is 30 columns, but these ECR's can use up to 40 characters for the Receipt Logo. The default setting is selected here.

Comms Retries

- There can be various reasons for Communications to fail. The number of times to retry is selected here. A setting of 2 should suit most applications, but a range from 0 to 20 is available.

Register Name

- You can give each ECR in the database a name to help identify it. This name along with the ECR number will be displayed on all forms that refer to specific ECR's.

Realm Name and Password

- For communicating to the Starrtec TCP/IP Interface for **Sharp** ECR's, you must supply a name and password, which has been set in the ECR, before communications is possible.

Buttons:

Delete Register

- Delete the currently selected register.

Cancel

- Cancel the form (exit).

Add New Register

- Add a new register to the database.

Change Details

- Change the details of the selected ECR. The Number and Type can't be changed.

Firmware Version

- Display the Firmware Version Information for the selected ECR if the firmware supports this feature.

TCP/IP Configuration

This form is only applicable to the Starrtec Services TCP/IP Interface Boards, allowing programming of all 7000 Jobs except the ECR IP Address and Net Mask.

TCP/IP Configuration

Current ECR
Register: 192.168.0.201
Members Bar

TCP/IP Modem Email **Gaming**

Interface Turbo Bonus
System ID 201
MCR Track Number Track 2
Server Port 10025
Server Address 192.168.0.101
Server Timeout 10
Countdown Timer 5

Accrual Account 1
Redeem Account 1
Accrual Conversion 001.000000
Redeem Conversion 100.000000
Gaming Configuration 0001
Auth. Dealer Name Not Authorised

Edit Cancel Close

Modem Setup Utility

This Utility allows you to configure different modems to suit communicating with **Sharp** ECR's. Each setup can be stored in the database.

After the Preamble, each String (1 to 3) and the Postamble there is a Carriage Return (except in the case of the Netcomm Factory Reset). NB The **AT** is added by the utility when sending to the modem, so please don't add it to any strings you enter.

The Setup form has three sections;

Preamble:

This is the first string sent to the modem, and has some fixed settings - a Reset and two Factory Resets (one supports the Netcomm **&F.**)

String 1 to String 3:

These are three separate strings that are sent to the register in order after the **Preamble**. Some settings need to be completed on their own like the **+MS** command in String 2 on the sample form.

Postamble:

This is the last thing sent to the Modem and is used for storing the profile in the modem.

If you are programming a modem for use on a remote ECR, then setting the Baud Rate, Parity, Data and Stop Bits is can be very important before programming the modem. These settings are also stored with the setup in the database.

A setup can be as simple as doing a factory reset. In this case you leave **String 1** to **3** blank and set nothing for the **Postamble**. There is a CheckBox for each of the 5 Strings to send. You would normally Check these, except in cases where something you are programming stops responses from the modem, like the string in **String 3** below.

To program the modem, attach it to the Comm Port set on the form and press **Program**

Modem.

Modem Setup Utility

Stored Modem Setups

dfm560e

Port Number

1

Setup Strings to Send

Preamble

☐ Nothing

☐ Reset (Z)

☒ Factory Reset (&F)

☐ Netcomm Factory Reset (&F.)

☒ Wait for OK?

String 1

s0=1&d0&k0&s0%c0

☒ Wait for OK?

String 2

+ms=11,0,9600,9600

☒ Wait for OK?

String 3

q1e0

☐ Wait for OK?

Postamble

☐ Nothing

☒ Store Current Configuration (&W)

☐ Store Current Configuration as Profile

0

☐ Wait for OK?

Baud Rate

9600

Parity

Odd

Data Bits

7

Stop Bits

1

Delete Setup

Add New Setup

Change Details

Cancel

Program Modem

Auto Keys

This form allows you to edit the Auto Sequencing Key information. There are 25 key sequences per Auto Key (the buttons labeled 1 to 25 on the form).

Auto Keys

Current ECR

Register: 192.168.10.4 600

UP-600 TCP/IP

Auto Key: 1

Key Sequence

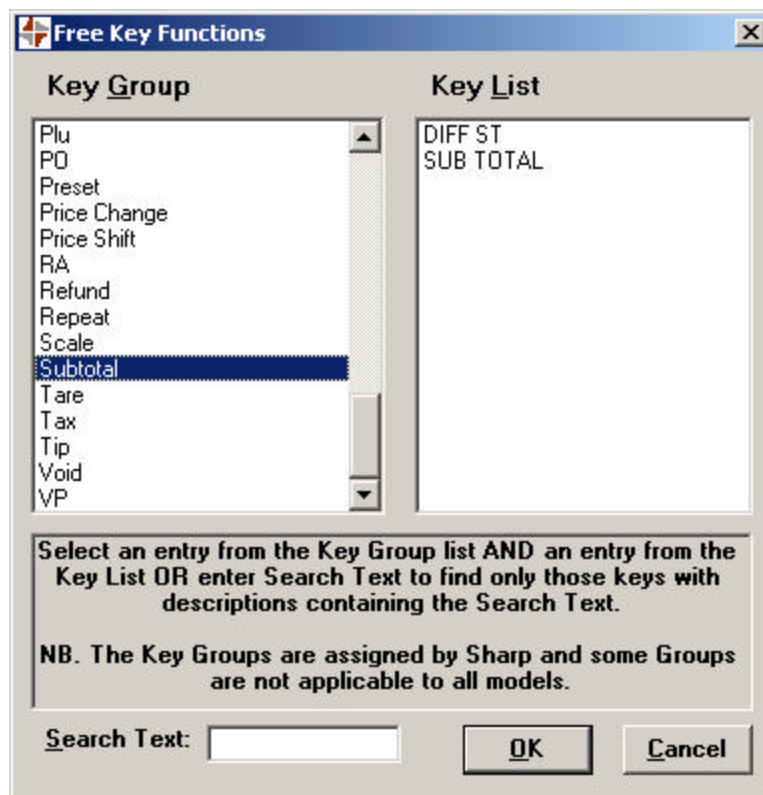
1	1 KEY	6	INHIBIT	11	INHIBIT	16	INHIBIT	21	INHIBIT
2	PLU/EAN	7	INHIBIT	12	INHIBIT	17	INHIBIT	22	INHIBIT
3	AUTO 2	8	INHIBIT	13	INHIBIT	18	INHIBIT	23	INHIBIT
4	INHIBIT	9	INHIBIT	14	INHIBIT	19	INHIBIT	24	INHIBIT
5	INHIBIT	10	INHIBIT	15	INHIBIT	20	INHIBIT	25	INHIBIT

To edit a keystroke, click on the key and select from the menu, or use the quick-edit keys;
[0 to 9], [Z]=00, [=]=decimal point, [X]=multiply,
[S]=sub-total, [T]=TL/CASH, [I]=INHIBIT

Edit Cancel Close

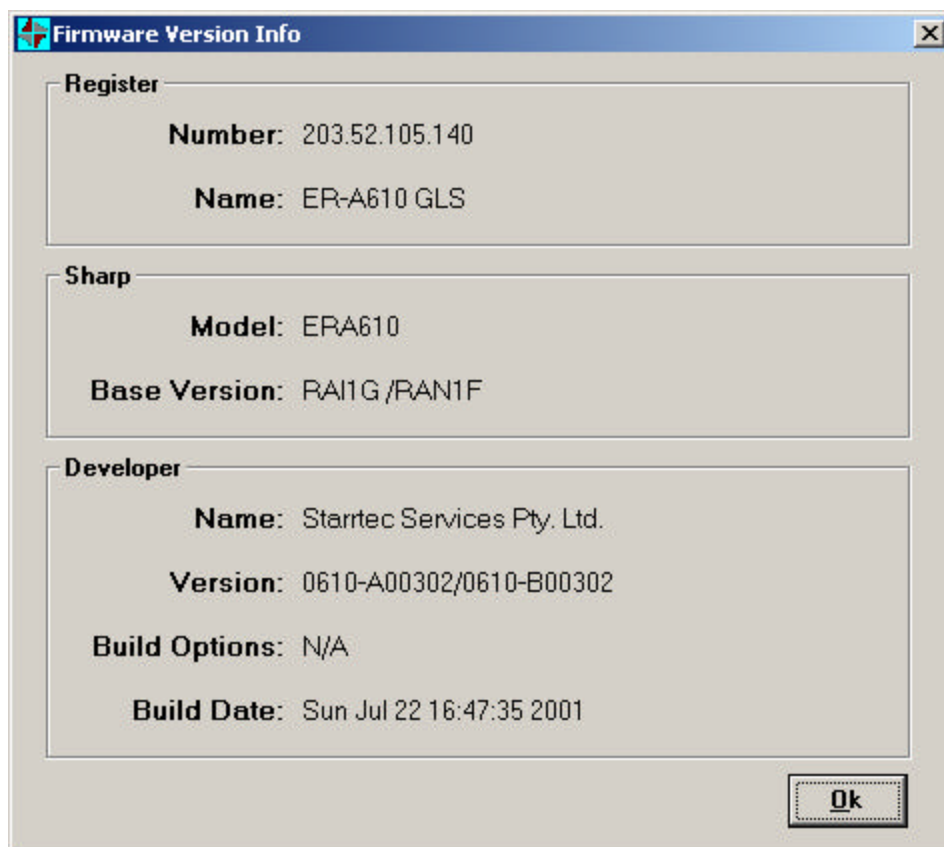
The Auto keys must exist in the ECR before you can edit them on this form. To edit a sequence, use either;

- The number keys 0 to 9, Z = 00, decimal point, X = multiply, S = SUBTOTAL, T = TL/CASH and I = INHIBIT.
- Clicking on a sequence button will display a Free Key Function form for you to select available keys from. The keys are grouped, which may make finding the key you want a little hard as some of the groups are a little obscure. An alternative is to start typing the key function into the **Search Text** box and keys matching the description will start appearing in the **Key List**. Highlight this key and select **OK**.



Firmware Version Info

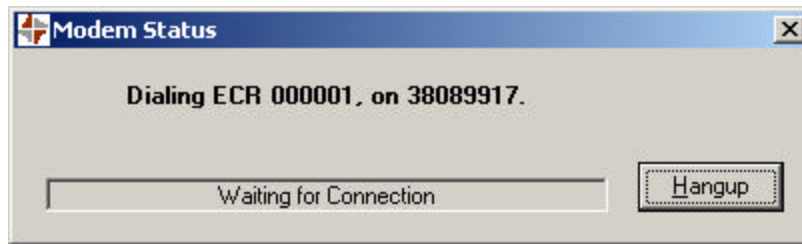
Display firmware version information obtained from the selected register. This information is embedded in the firmware by the software developer. This is not supported in the standard Sharp ECR.



Modem Status

This form is displayed while the modem is being dialed, providing some feedback from the process.

Selecting **Hangup** will stop the dialing and disconnect the modem.



Edit Products

This Form allows Editing of the Product (PLU and EAN) Data. This data is global, which means it is common to all ECR's configured in **POSUtility**. This data can be entered here, or retrieved from an ECR. Obviously, if you retrieve the data from an ECR it will overwrite the data currently held in the database. Also be aware that if you have an ECR configured for a 16 Alpha description for the Product Name and you send it to and call it back from an ECR configured for an 8 Alpha Description, then your database will now have the descriptions truncated to 8 Alphas! Please be careful. Product Data can then be maintained using this forms options of Add, Edit and Delete.

If you try to Add a Product without any Departments existing, you will be advised and this Form will be closed.

Depending on the type of registers in the current **POSUtility** Database, one of two different Product Forms will be displayed. If there are either ER-A770's or UP-3300's an extended form will be displayed. These ECR's have extra price and description fields.

Buttons:

Add

- Add Products to the database. Code, Description and Department must contain data. If you try to leave any of these blank or enter a duplicate Code **POSUtility** will advise you. Also, only Departments which exist can be used. A list of available ones will be displayed in this field. The Add button will change to an Ok button to accept the entered data, which can be done by either pressing Enter or clicking the Ok with the mouse. Another record can then be added by simply pressing Enter or clicking Add. Pressing Cancel or the ESC buttons will cancel the Add. Other data fields that are left blank will be defaulted to 0.

Edit

- Edit the selected Product. Everything except the Code can be edited using this button. The only way to change a Code is to Delete the Department. The Edit button will change to an Ok button to accept the changes, which can be done by either pressing Enter or clicking the Ok with the mouse. To edit the next record, simply press Enter or click on Edit. To assist with editing, the cursor will go to the Price field first as this is usually the most changed information. Pressing

Cancel of the ESC buttons will cancel the Editing.

Delete

- Delete the selected Product. You will be asked to confirm the deletion.

Print

- A simple report can be sent to the printer. Note that if the extended Product Form is displayed, then each PLU will take up 7 lines on the paper - you could use a lot of paper if there are a lot of PLU's.

Cancel

- Cancel the current operation. Pressing the ESC button has the same effect.

Close

- Exit the Product Form.

Data Fields:

Code

- The Product Code (PLU or EAN). PLU Codes are between 1 and 999999. Numbers bigger than this are assumed to be EAN's. Note that **POSUtility** does not check that the EAN (Barcode) you enter is valid. This field cannot be left blank or contain a duplicate.

Description

- The Product Description. This can be up to 16 characters and cannot be left blank. If you wish to use expanded characters (Double Size), do a 'SHIFT+^' before the character you want expanded. Note that this character takes up two places.

Dept

- The Product Department Number. This cannot be left blank and must exist in the Department Database. A list of available Departments will drop-down when you enter this field.

Dept Description

- The Department Description the Product is linked to. This is displayed only and cannot be edited.

Price

- The Product Prices. When Products are sent to an ECR, only the number of Prices that the ECR will accept will be sent.

Kitchen Printer

- The Kitchen Printer number. These can be between 0 and 9.

Points

- The SharpSmart Points. These can be between 0 and 9999.

Promo Group

- The SharpSmart Promotional Group. This can be either 0, 1 or 2.

Data grid (List)

- This displays a list of Products from the database. These can be sorted by clicking on the Column Headings. The Column Heading Text will change to Blue to show the sort order. The Modified column identifies records which are new, or have been modified. This is used for the Send PLU Options.

Key Colour

- The Key Colour can be selected for ECR's which support this feature e.g. The UP-3300.

Condiment Programming

- Settings for the PLU related to its use as a Condiment can be selected here. The table it belongs to, whether it is only a Condiment only and its entry type.

Tax Status

- The Tax Status for the Department can be set here.

Other Fields

- For information on usage of the other selections for the Products, please consult the appropriate **Sharp** User Manual. As the Product Data is common to all ECR's in the current database, not all selections are applicable to all models. **POSUtility** will only send information to the ECR that it will accept, so setting a **Key Colour** for instance will have no affect on ECR's other than the Touch Screen Models.

File Menu:

- Product data can be printed from an option on the file Menu.

Tools Menu:

- Options on this menu allow you to 'Tick' ALL products as modified and also to 'Un-Tick' them. This is useful if you wish to send modified products to the ECR, as this operation doesn't delete the product file first. Deleting the product file also deletes and sales for the products.

Whilst this is not a complete list of settings available on the ECR for Products, a feature of **POSUtility** is its ability not to destroy the other settings if you first retrieve the Product Data from the ECR.

Edit Departments

This Form allows editing of the Department Data. This data is global, which means it is common to all ECR's configured in **POSUtility**. The data can be retrieved from an ECR or entered using this form. Obviously, if you retrieve the data from an ECR it will overwrite the data currently held in the database. Also be aware that if you have an ECR configured for a 16 Alpha description for the Department Name and you send it to and call it back from an ECR configured for an 8 Alpha Description, then your database will now have the descriptions truncated to 8 Alphas! Please be careful. Department Data can then be maintained using this forms options of Add, Edit and Delete.

The data is displayed as a list on the left side of the form, with the current record being shown in detail on the right side. To move through the database, the Data Control at the bottom can be used or the Up/Down Arrow keys and the PgUp/PgDn keys. If these keys don't work, use the mouse to Click on the list or Data Control as either of these must have the focus for this to work. The Data Control also has buttons for First/Last record, Bookmarks and Find.

Buttons:

Add

- Add Departments to the database. Code, Description and Group must contain data. If you try to leave any of these blank or enter a duplicate Code **POSUtility** will advise you. The Group can be between 1 and 17. Group 10 is a 'minus' Department and groups 11 to 17 are only available if the ECR is configured appropriately. The Add button will change to an Ok button to accept the entered data, which can be done by either pressing Enter or clicking the Ok with the mouse. Another record can then be added by simply pressing Enter or clicking Add. Pressing Cancel or the ESC buttons will cancel the Add. Other data fields that are left blank will be defaulted to 0.

Edit

- Edit the selected Department. Everything except the Code can be edited using this button. The only way to change a Code is to Delete the Department. The Edit button will change to an Ok button to accept the changes, which can be done by either pressing Enter or clicking the Ok with the mouse. To edit the next record, simply press Enter or click on Edit. To assist with editing, the cursor will go to the Price field first as this is usually the most changed information. Pressing Cancel or the ESC buttons will cancel the Editing.

Delete

- Delete the selected Department. You will be asked to confirm the deletion as well as not being able to Delete a Department that is being used by a Product.

Cancel

- Cancel the current operation. Pressing the ESC button has the same effect.

Close

- Exit the Department form.

Data Fields:

Code

- The Department Number between 1 and 99. This field cannot be blank or contain a duplicate.

Description

- The Department Description. If you leave it blank, you will be asked to confirm this. If you wish to use expanded characters (Double Size), do a 'SHIFT+^' before the character you want expanded. Note that this character takes up two places.

Group

- The Department Group. Valid Groups are between 1 and 17. Group 10 is a Minus Department and Groups 11 to 17 are only available if the ECR has been configured appropriately.

Price & Sign

- The price for the Department.
- By selecting Minus the Department Group will change to 10, a discount. This Check Box will also be ticked if the Group is changed to 10.

Kitchen Printer

- The Kitchen Printer number. These can be between 0 and 9.

Promo Group

- The SharpSmart Promotional Group. This can be either 0, 1 or 2.

Data Grid (List)

- This displays a list of Departments from the database. These can be sorted by clicking on the Column Headings. The Column Heading Text will change to Blue to show the sort order.

Key Colour

- The Key Colour can be selected for ECR's which support this feature e.g. The UP-3300.

Tax Status

- The Tax Status for the Department can be set here.

Other Fields

- For information on usage of the other selections for the Departments, please consult the appropriate **Sharp** User Manual. As the Department Data is common to all ECR's in the current database, not all selections are applicable to all models. **POSUtility** will only send information to the ECR that it will accept, so setting a **Key Colour** for instance will have no affect on ECR's other than the Touch Screen Models.

Tools

Options available here are all destructive except the Compact Database. Please be careful.

Compact Database

- **POSUtility** being an ECR Maintenance Tool will create waste space in the Access Database which it uses. This is created by deleting data from it. To reclaim this space this option can be run. The active database is backed up before the compaction takes place. If the result is successful you will be notified. If it fails for some reason, then the backup will be restored.

Repair Database

- This option repairs the current database.

Delete Files

- The following options all destroy data of some sort.

Delete Log File

- POSUtilityLog.txt will be deleted.

Delete ALL Sales Files

- (*.csv) will be deleted.

Delete Data Files

- This option will allow you to delete ECR's and the Product and Department Data from the database.

Delete AllRam Export Files

- (*.are) will be deleted. These are text files created by the Export AllRam option of the File Menu.

Utilities

Change ECR Type

- Allows changing the type, of registers that support the feature, to the SmartCard equivalent.

Copy Register Data

- Allows various data files to be copied from one register in the database to one or more of compatible type types. Various CheckBoxes will be enabled depending on available data for the selected ECR. As these boxes are checked, the list of target ECR's will be modified to ensure reasonable compatibility. ***NB. The responsibility is on the user to ensure they understand the capabilities of the target ECR.***

Modem Configuration

File

This menu allows viewing of the Log and Sales Files, Open a different Database and Exiting from the program.

Open Log & Sales Files

- Selecting this option will display the Open File Dialog. The two choices of file types available are 'TXT' and 'CSV'. The POSUtilityLog.txt is the Log File for the program and is also the default filename displayed. To view Sales Files, select 'CSV' as the file type. These files are by default opened with Notepad.

Open Database

- Allows you to open a database in a different directory. Note that the database MUST be named '**POSUtility.mdb**'. Selecting this option will display an input form asking you for a Customer Name. This is the name of the folder where the database is. If the Folder was created with the Create Customer Database option, then it will be under **ICUSTOMERS**. If a folder doesn't exist by that name, then a Directory Selection Dialog will be displayed to assist you in finding the correct Folder.

N.B. POSUtility will not start if a 'POSUtility.mdb' does not exist in the program directory.

Create Customer Database

- This option allows you to create and organise different databases. The starting path for **POSUtility** is **ICUSTOMERS**. NB. This will be created on the drive where **POSUtility** was installed. An entry form will be displayed into which you can enter a name for the Folder to be created under the starting path. An empty 'POSUtility.mdb' will be copied to this Folder. For further information, see Managing Databases.

Export All RAM Data

- The All RAM Data (this is a memory image of the ECR and Doesn't contain any editable data!), that already exists in the database for an ECR can be exported to a text file for easy emailing and duplication of the ECR. The file created has a name of the following format, **XT**<ecr_type>**R**<ecr_number>**.ARE**

Import All RAM Data

- The data exported with the Export function above can be imported into the current database. You are given a choice of target ECR numbers. The original number (from the filename) is offered as a default. You can change this number, making it easy to duplicate ECR's having the same memory image.

Products Export/Import

- The Product Data can be exported from the current database to a 'csv' file for importing into other programs. A subset of fields is exported, with the first record containing the field names for your reference. Default values are supplied for fields

not supported in the export format. The format of the file to import is the same as the export file including the first record containing field names.

Departments Export/Import

- The Department Data export/import is similar to the Products.

Exit

- Close all files (except files opened through the above method) and exit the program.

Edit Databases and Configuration Options.

These buttons control access to the different areas of the **POSUtility** Database. Only one of these functions is able to be open at a time. When Data is being Sent to or Retrieved from the ECR, the Buttons related to the operation in progress are disabled. These will be re-enabled at the end of communications.

Edit Databases and Configuration

Delete Data

- Delete PLU/EAN and Department Data and ECR Data from the Database.

Direct Keys

- Edit the Direct Key information of an ECR.

Free Keys

- Edit the Free Key information of an ECR.

Departments

- Edit the Global Department Information. If the database contains one or more UP-3300's, then a form containing more detailed information will be displayed.

Products

- Edit the Global Product Information. If the database contains one or more UP-3300's, then a form containing more detailed information will be displayed.

Logo

- Edit the ECR Logo.

Funct Text

- Edit the Function Text information of an ECR.

Registers

- Configure the ECR numbers and Types.

Condiments

- Edit the Condiment Tables. Note that the PLU's used in the tables must exist in the Product Database.

PLU Menu Presets

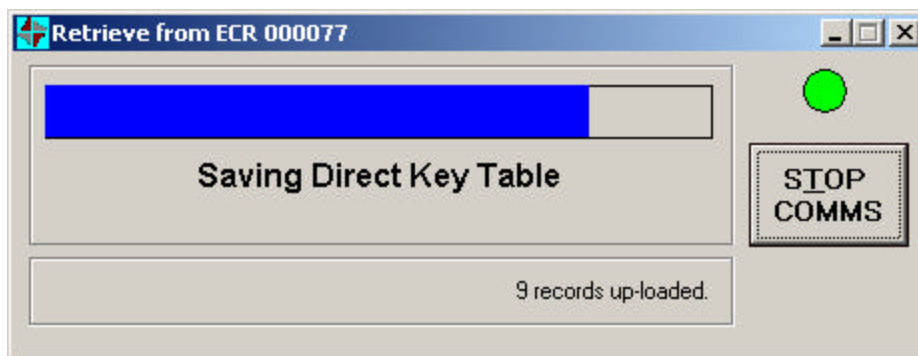
- Edit the PLU Menu Presets. Like Condiments, the PLU's used must exist in the current Product Database.

Progress

The Progress Bar is displayed whenever ECR Communications is in progress. This gives you some indication of how long a Job will take. Also displayed, depending on what is being done, is a number of information messages. These will show the Product and Department Codes and Descriptions, what Sales are being read etc.

Preceding the start of each Communications Session, **POSUtility** performs a 'Comms Test' (Shown as 'Comms Test' on the Main Form). The result of this test is displayed on the Progress Bar as a coloured light; Green = OK and Red = Failed.

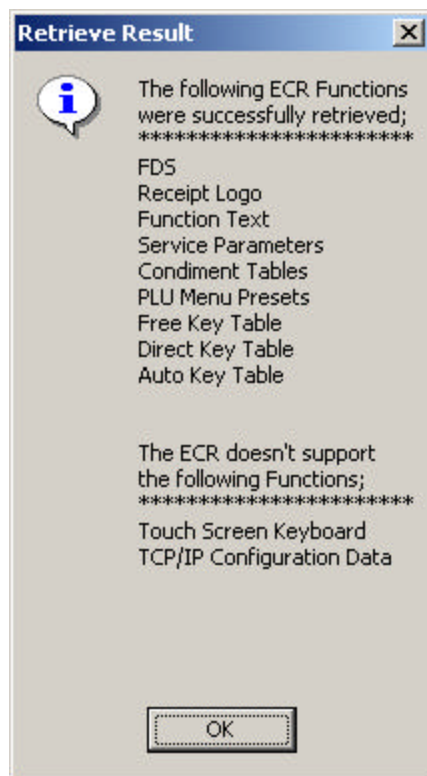
While Comms is established the Green Light will stay on.



STOP COMMS

- This button is visible when it is allowable to Stop ECR Communications. If a RETRIEVING Job is in progress and Comms is Stopped, then the changes to the Database are undone (i.e. The original Database is restored). Stopping a SEND Job is a bit more unpredictable from the ECR's point of view. This option is enabled during SEND Jobs as it does have a use at times. Please make sure that you Re-Program the ECR again if you Stop a SEND Job.

After the Communications has completed, a summary of the results will be displayed like the sample below.



Edit Direct Keys

Direct Keys refer to buttons which have a Department Number or PLU Number associated with them. These keys can also be referred to as 'Fast Keys' or 'Presets'. This screen shows the information that you would get from a PGM2 2119 Report. The actual Direct Keys are defined in Edit Free Keys.

Editing of Direct Keys is not allowed on some ECR Types. The number of levels varies depending on ECR Type. **POSUtility** only allows editing of levels 1 to 3 even though some ECR's can have up to 10 levels. Levels 7 to 10 are saved in **POSUtility** and will be sent back with the changes you have made to levels 1 to 3. The form displays the appropriate number of Levels to suit the selected ECR Type.

You are only able to put Departments on Level 1.

The three columns on this form are;

Direct Key Number	Type (L1-L3)	Value (L1-L3)
The Preset Number selected in Free Keys.	The Key Type by Level.	The Department or PLU Number.

Edit Direct Keys

Current ECR:
Register:

Two-Up Bar

Direct Key		Level	
Number	Type L 1	Value L 1	
	Type L 2	Value L 2	
	Type L 3	Value L 3	
61	PLU	1	
	Inhibited	0	
	Inhibited	0	
62	PLU	2	
	Inhibited	0	
	Inhibited	0	
63	PLU	3	
	Inhibited	0	
	Inhibited	0	
64	PLU	4	
	KeyDescription	0	
	PLU	0	
65	Inhibited	5	
	Department	0	
	Inhibited	0	

Press F1 for help with using this form.

Clicking the mouse in the Type Cell, will drop-down a selection list for the Level. On Level one, the available Types are;

- PLU
- Inhibited
- Department

On Level 2 and 3, the available Types are;

- PLU
- Inhibited

N.B. The Key Type can also be changed by selecting the first letter of the type while in the cell. e.g. I = Inhibit, P = PLU, D = Department. If Inhibit is selected then the Value is set to 0..

The desired Department or PLU Number is entered in the Value Cell.

Current ECR

- Information displayed is for this Register and Type.

Print

- Print ALL the data from the Direct Key Grid for the selected ECR.

Close. Close the Direct Key form

Edit Function Text

This Form allows editing of the Function Text or 'Text Programming for Misc Keys'. Editing of 'Message Text' cannot be done by this version of **POSUtility**.

Editing of Function Text is not available for all ECR Types.

There are two columns on this form; ECR Original and Function Text. The ECR Original is as it has been retrieved from the ECR and cannot be changed. This is for your reference if you want to return some text to what it was before. The Function Text column is the one you can edit and also send back to the ECR. NB. that when you send the changed Function Text to the ECR and Retrieve it again, the 'ECR Original' will be your changed version.

The Default Text can be changed selecting the desired Cell. To make a character Double Width, use the following key combination [SHIFT+6], which is actually a [^]. This will insert the character that **SHARP** uses for this purpose. Each character that you want to make Double Width must be preceded with one of these special characters. A look at what is retrieved from the ECR will give a better idea of what is required.

Current ECR

- Information displayed is for this Register and Type.

Close

- Close the Function Text form.

Edit Free Keys

Free Keys refer to all the available types of keys that the ECR supports except the Receipt and Journal Feed keys. The information displayed here is a combination of the SRV 950 and 951 Reports. Similarly, the programming functions of the SRV 950 and 951 Jobs can be performed on this form. Note editing of Free Keys is not available for all ECR Types.

N.B. *The changes do not take effect until the Free Keys are sent back to the ECR and retrieved again. This means that you can't create a Direct Key here and go straight to Edit Direct Keys and expect to find it.*

The three columns shown on this form are;

Key	Function	Value
The actual key position.	The current Function of the Key	The Key value

To change the Function of a Key, click the mouse on the applicable Value Cell. This will drop-down a list of available Functions for the ECR Type. Select the required Function.

N.B. *The **Key** is NOT the Key Number shown on the Left-Hand-Side of the 950 Report, but the number shown in the Right-Hand-Column of same.*

Example:

On an ER-A570, after an MRS the RF (Refund) Function is on Key 1. This is the bottom left key on the keyboard. To change this to a NS (No Sale) Function, click the mouse on the Value Cell of Key 1 and select NO SALE from the dropped-down list. This list is in alphabetical order.

Current ECR

- Information displayed is for this Register and Type.

Print

- Print ALL the data from the Free Keys Grid for the selected ECR..

Close

- Close the Free Key Form.

About POSUtility

This form displays general information about **POSUtility** , where you can obtain support and other software for **SHARP** Cash Registers.

System Info...

- Show System Information for your computer.

Ok

- Close the About form.

Send to Register options.

These options control what data is sent to the ECR. You may select any number of these options for sending to the ECR with one exception -- Sending ALL RAM Data can only be done on its own.

SEND TO REGISTER

ECR Files | **Products**

- ☐ PCs Date & Time
- ☐ Receipt Logo
- ☐ Function Text
- ☐ SRV Parameters
- ☐ Condiment Tables
- ☐ PLU Menu Preset
- ☐ Free Key Table
- ☐ Direct Keys
- ☐ Auto Keys
- ☐ Touch Screen
- ☐ ECR RAM Image
- ☐ TCP/IP Config

Tick All

☒ CommsTest

SEND

Send PLU EAN Options

There are four options for sending PLU/EAN's to the ECR. If this data has been retrieved from the register before modifying, then ALL the register PLU and EAN settings which will be affected by sending this data will remain unchanged on the ECR. These are things like Recipes, Condiments etc. Beside two of the options are text boxes which display how many records are in the PLU/EAN Database. One shows ALL the records and the other the MODIFIED records. Using Modified Records is useful when you have made a small number of changes to the Product Data, as the changes can be quickly sent to the ECR. If you have deleted some Products, then use the ALL option.

ALL

Checking this option will allow sending of All the PLU's and EAN's in the **POSUtility** Database. Depending on the ECR Type, some of this data will may not be sent. Using this option will first delete all PLU/EAN Data in the ECR before sending the new data. If the number of records you are trying to send

exceeds the number the ECR is able to accept, then you will receive a notification message. Using this option sets the 'Modified Flag' on the PLU/EAN Record OFF.

MODIFIED only

- Modified PLU's and EAN's are those which have been edited since the last time they were retrieved from the ECR or sent to the ECR.

MODIFIED only & clear Flag

- Modified PLU's and EAN's are those which have been edited since the last time they were retrieved from the ECR or sent to the ECR. This operation will also set the 'Modified Flag' on the PLU/EAN Record OFF.

Don't send Plu's or EAN's

- This is the default option here.

Departments

- Send all the Department information to the ECR. The file in the ECR is deleted first (and hence deletes and sales). If you try to send more Departments than the ECR has been configured to accept, then you will receive a message to the effect.

ALL RAM Data

- Send ALL RAM Data. Note that if you send All RAM Data belonging to an ECR with a different Firmware (EPROM) Version can cause the target ECR to **lock up**. Selecting this option with deselect all other send options. Conversely, selecting other options will deselect this option.

PCs Date Time

- Sends the PCs date & time.

Receipt Logo

Function Text

SRV Parameters

- This data is not editable, and is sent back to the ECR the same as it was Retrieved.

Condiment Tables

PLU Menu Presets

Free Key Table

Direct Keys

Auto Keys

Touch Screen

- While you can't edit the UP-3300 Touch Screen Keyboard in **POSUtility**, these files are saved back to the database when data is retrieved from the ECR and an be

sent back using this option.

TCP/IP Config

- This option is only supported by the Starrtec Services TCP/IP Interface for **Sharp** ECR's. With this interface fitted, programming for the 7000 Jobs can be sent to the ECR.

Comms Test

- This is a Communications Test to see if there is a valid ECR connected to the computer and if it is available for Comms. This test is performed before EVERY Comms Session. If no SEND or RETRIEVE options are selected, the test will be performed on its own. During this test the Progress Bar will be displayed to show the result.

SEND

- Clicking this button will ask you to Select a Register(ECR). The Register Type for the selected ECR is also displayed. Once a register is selected you have a choice to proceed with or cancel the pending Communications.

Condiment Tables

You cannot create Condiment Tables from scratch in **POSUtility**. You must create at least one table in the ECR, then retrieve the data (**including PLU's**) which will include the table you just created. You may then edit this table and create or delete as required. The PLU's you use in the Condiment Table **must** exist in the ECR and **POSUtility**.

To add to either Grid, press the INS(ert) key or using the mouse DoubleClick. If you are adding PLU's, a list of available PLU's will be displayed. You can sort this list by clicking on the column headings. To add the currently highlighted PLU, DoubleClick on the row with the mouse.

To delete from either Grid, press the DEL(ete) key. You will be asked to confirm the deletion.

The edit button allows you to edit the Table Description and Next Table Link.

The screenshot shows the 'Condiment Tables' window with the following components:

- Current ECR:** A text box containing '000070' and a button labeled '700'.
- Condiment Tables:** A table with columns 'Table #', 'Next Table', and 'Description'. It contains one row: Table # 1, Next Table 2, Description JUGS BEER.
- Current Table Details:** A section with three input fields: 'Table #' (1), 'Next Link' (2), and 'Description' (JUGS BEER).
- PLU's Linked to Table:** A table with columns 'PLU Number' and 'Description'. It contains three rows: 00000000000073 (JUG SOFT), 00000000000037 (Jugs Full - highlighted), and 00000000000038 (Jugs Light).
- Buttons:** Navigation buttons (left, right, etc.), 'Edit', 'Cancel', and 'Close'.
- Instructions:** A note at the bottom right: 'To Add to either grid, DbClick the mouse or press INS(ert). To delete press DEL(ete).'.

Add PLU's and/or Menus

This form is used by both the Condiment Table and PLU Menu Preset options for selecting the PLU or Menu to add. If this form has been activated by the adding to the Condiment Table, only PLU's will be able to be selected. If it was activated to add to the PLU Menus, you have the choice of adding PLU's or Menus.

Sorting of the displayed data is done by clicking on the column headings.

To add the selected data, DoubleClick using the mouse. The last item you added is displayed.

Sorted By Code

PLU Code	Description	Dept #
1	XXXX STUB	2
2	XXXX GOLD STUB	2
3	XXXX LIGHT STUB	2
4	P/BITTERS STUB	2
5	P/LIGHT STUB	2
6	VB STUB	2
7	C/COLD STUB	2
8	BUNDY PREMIUM	2
9	CARBINE/S STUB	2
10	CROWN LAGER	2
11	C/MAINE DRY STB	2
12	HAN ICE STUB	2
13	HAH PRE LIG STU	2
14	HAH PREM STUBBI	2
15	CAS PRE LIG STB	2
16	FOSTERS STUB	2
17	FOSTERS L/STUB	2
18	F/RS S/B/L STB	1
19	FST/L/ICE STB	2

☐ Add Menus ☒ Add PLU's

Last PLU Added: 000000000000008

Close

PLU Menu Preset

You cannot create Menus from scratch in **POSUtility**. You must create at least one Menu in the ECR, then retrieve the data (**including PLU's**) which will include the Menu you just created. You may then edit the Menu table and create or delete as required. The PLU's you use in the Menu **must** exist in the ECR and **POSUtility**.

To add to either Grid, press the INS(ert) key or using the mouse DoubleClick. If you are adding PLU's or Menus, a list of available PLU's will be displayed. There is an option on the form to select Menus or PLU's. You can sort this list by clicking on the column

headings. To add the currently highlighted PLU or Menu, DoubleClick on the row with the mouse.

To delete from either Grid, press the DEL(ete) key. You will be asked to confirm the deletion.

The edit button allows you to edit the Menu Description.

The screenshot shows the 'PLU Menu Preset' window. It contains several sections for configuring menu items and their links.

Current ECR: A text box displays '000077' with navigation buttons and a '770' value.

Two-Up Bar: A button labeled 'Two-Up Bar'.

PLU Menu Presets: A table with two columns: 'Menu #' and 'Description'.

Menu #	Description
1	BEER
2	SPIRITS

Current Menu Details: A section with 'Menu #' (1) and 'Description' (BEER) fields.

PLU's & Menus Linked to Menu: A table with three columns: 'PLU/Menu', 'Description', and 'Menu'.

PLU/Menu	Description	Menu
00000000000002	MIDDY HEAVY	<input type="checkbox"/>
00000000000001	SCHOONER HEA	<input checked="" type="checkbox"/>
00000000000016	MIDDY LITE	<input type="checkbox"/>
00000000000015	SCHOONER LIT	<input checked="" type="checkbox"/>
00000000000035	7oz Full	<input type="checkbox"/>
00000000000033	Middie Full	<input checked="" type="checkbox"/>

Buttons: Navigation buttons, 'Edit', 'Cancel', and 'Close'.

Instructions: To Add to either grid, DblClick the mouse or press INS(ert). To delete press DEL(ete).

POS Utility Cable

PC to POS



POS 9 way D type Female

PC 9 way D type Female

Function	Pin No.		Pin No.	Function
DCD (Data Carrier Detect)	1	}	1	DCD (Data Carrier Detect)
DTR (Data Terminal Ready)	4		4	DTR (Data Terminal Ready)
DSR (Data Set Ready)	6		6	DSR (Data Set Ready)
RX (Receive Data)	2	_____	3	RX (Receive Data)
TX (Transmit Data)	3	_____	2	TX (Transmit Data)
GND (Signal Ground)	5	_____	5	GND (Signal Ground)
RTS (Request To Send)	7	}	7	RTS (Request To Send)
CTS (Clear To Send)	8		8	CTS (Clear To Send)
RI (Ring Indicator)	9	Not Used	9	RI (Ring Indicator)